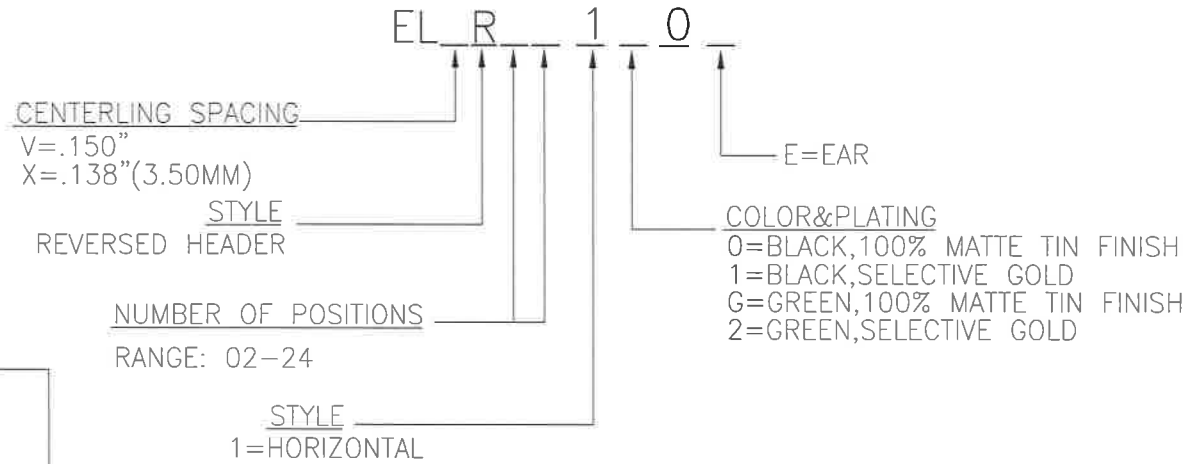


REV	ECN	DESCRIPTION	APP'D
-	2978	RELEASE	
A	3011	SQUARE EARS	
B	4401	ADD PIN BOSS RIB,ADD INSPECT DIM	
C	7467	ADD W/O EAR VERSION	15< 3/15

ELVR/XR SERIES PART NUMBERING SCHEME



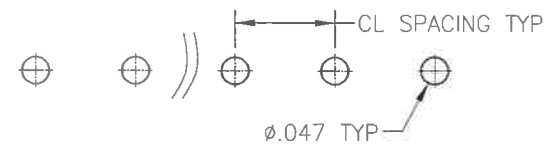
CURRENT - 12A
VOLTAGE - 300V
U.L. FILE NO. E83421

DIN VDE 0627:1986
DIN VDE 0110-1:1989
EN 60947-1:1991
EN 60947-7-1:1992
CURRENT - 12A
VOLTAGE - 300V
TUV FILE NO. PENDING

MATERIALS:
HOUSING: PA4/6, UL94 V-0
CONTACT: BRASS, OPTIONAL FINISH

OPERATING TEMP: -40°C TO 125°C
250°C 1 MINUTE MAX FOR SOLDERING

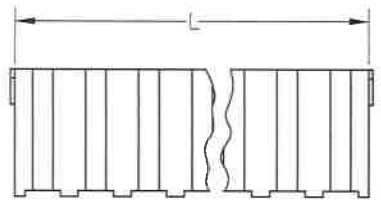
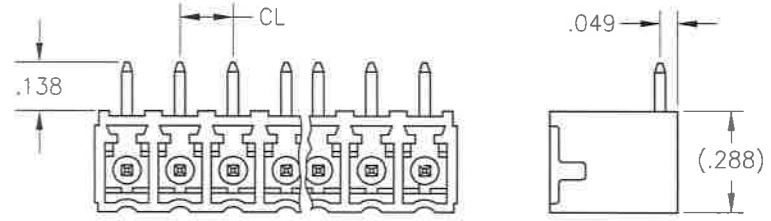
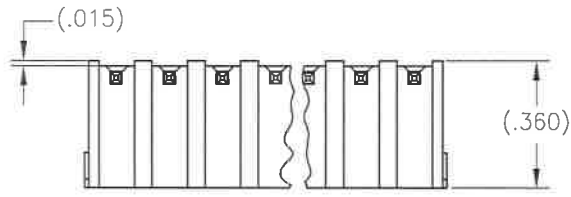
PRINTED CIRCUIT BOARD CONFIGURATION



RECOMMENDED PCB THICKNESS: .062±.008

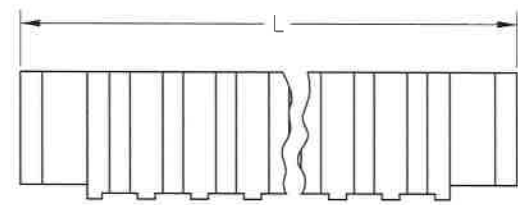
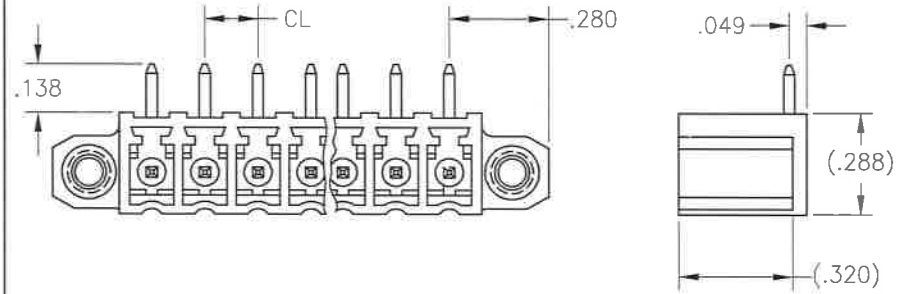
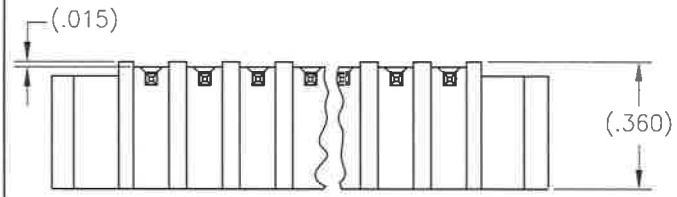
DIMENSIONS ANSI Y14.5M UNITS: INCHES PRO/E FILE	TOLERANCES .XX ±0.01 .XXX ±0.005 ANGLES ±2.0°	PROJECTION 	Amphenol Pcd		TITLE ELV/X SERIES-HDR ASSY REVERSED		
			SPECIFICATION DRAWING				
ORIGINAL	THIS DOCUMENT CONTAINS PROPRIETARY INFORMATION WHICH IS THE CONFIDENTIAL PROPERTY OF AMPHENOL PCD INC., BEVERLY, MA		ENGR	A.GATTUSO 10/14/96	SIZE A	DWG NO. ELVR02100_C	REV C
			CHKD	I.QUINN 12/31/96			
			APPD	J.CAHALY 12/31/96	CODE: 58982	SCALE: NONE	SHEET 1 OF 2

ELVR/XR WITHOUT EAR



ELVR:L=(NUM OF POSX.150)+.032"
 ELXR:L=(NUM OF POSX.138)+.028"

ELVR/XR WITH EAR



ELVR:L=(NUM OF POSX.150)+.410"
 ELXR:L=(NUM OF POSX.138)+.406"

SIZE A	DWG NO. ELVR02100_C	REV C
CODE: 58982	SCALE: NONE	SHEET 2 OF 2

PL 3/15